



# hd Sub15

## Subwoofer

The **hd Sub15** is a passive high-performance subwoofer equipped with a 15" woofer in a bass reflex tuning. The specially developed 15" long-excursion chassis with 4" voice coil and optimized ventilation simultaneously achieves a high power handling and excellent dynamics, as well as precise low-frequency reproduction



for small to medium-sized public address applications in mobile or permanently installed applications. The housing is made of multiplex wood and provided with a shock- and weather-protecting polyurethane coating. The front of the speaker is protected by a solid front grille with internal acoustic foam. Generously dimensioned carrying handles are integrated into the side walls. On the back there is a recessed connection field with two SpeakCON NL4 sockets for connection via pin 2+/2- and forwarding of the input signal. An M20 threaded insert on the top allows the mounting of a spacer rod. Operation is as a slave subwoofer on the active hd P15 system subwoofer or on all Harmonic Design system amplifiers to ensure reliable and accurate low-frequency reproduction.

### Features

- 15" high performance loudspeaker
- very high maxSPL of 136dB
- compact dimensions
- robust enclosure with polyurethane coating
- slave subwoofer for hd P15
- stand-alone or cardioid subwoofer array
- extends the frequency range below 40 Hz
- install version available

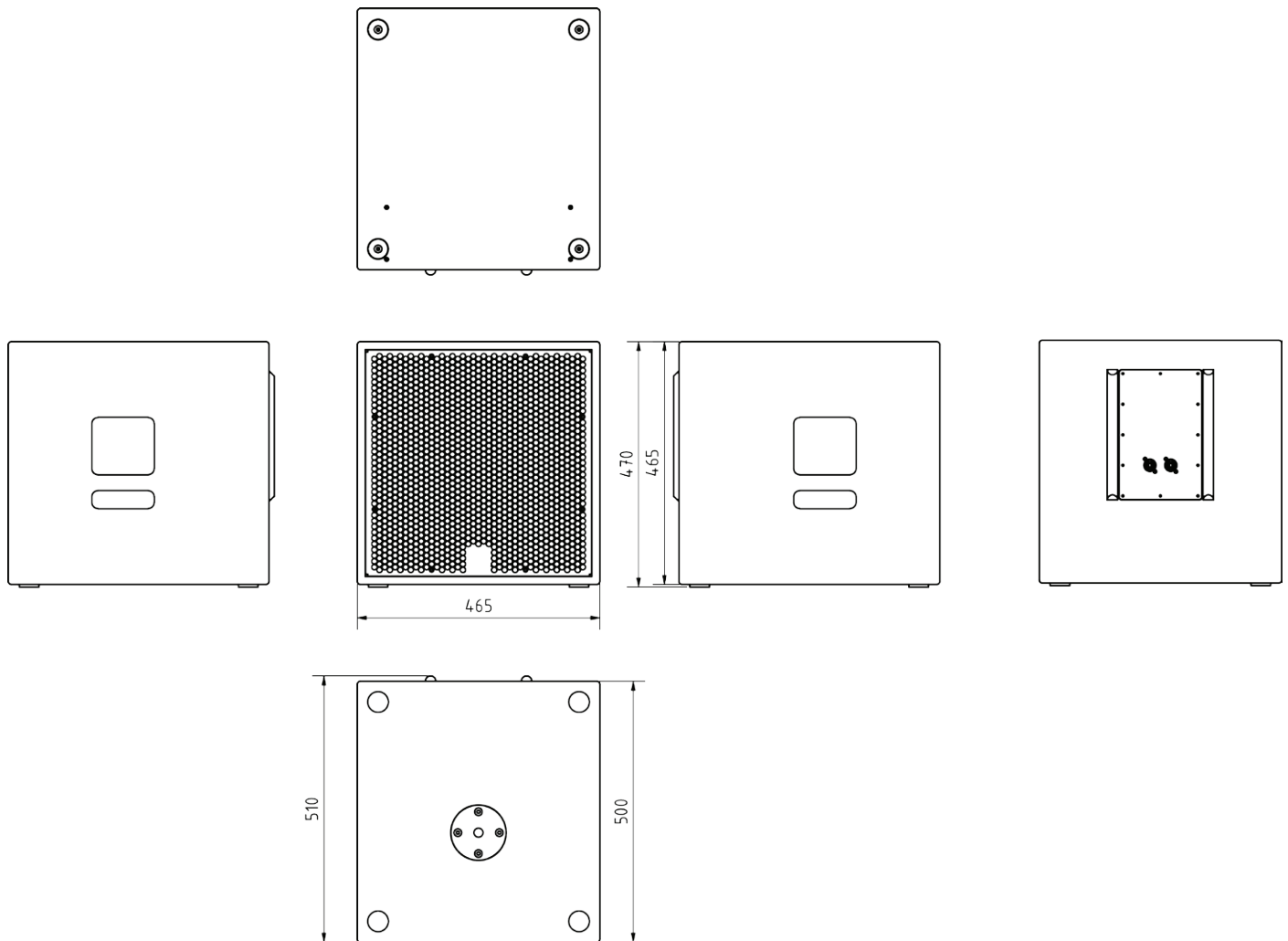
### Application

Live sound system, restaurants, bars, cinema, conference rooms, hotels, A / V installations, multimedia applications, TV studios, churches

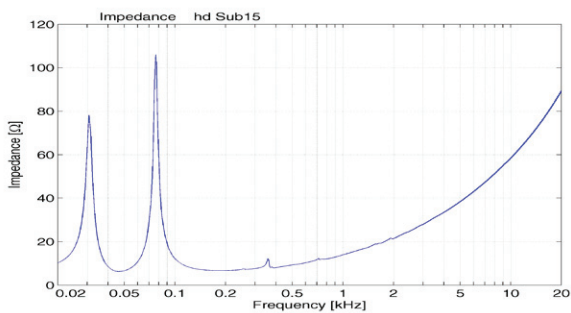
<b>Model</b>	<b>hd Sub15</b>
<b>Order number</b>	60015
<b>Acoustic design</b>	Bass reflex
<b>Transducers</b>	1x 15"- long-excursion ferrite woofer
<b>Impedance</b>	8 Ω
<b>Crossover</b>	variable according to the preset
<b>Coverage (hor x ver)</b>	omnidirectional, cardioid with preset
<b>Frequency range (-6dB)</b>	40 Hz - 130 Hz
<b>Sensitivity (1W / 1m)</b>	101 dB
<b>Power Rating AES / Peak</b>	1000 / 4000 W
<b>SPLmax @ 10% THD</b>	136 dB
<b>Enclosure</b>	robust multiplex housing with polyurethane coating black, recessed connection panel with 2x NL4, M20 thread, 2x carrying handle, steel grille with acoustic foam inside
<b>Optional Accessories</b>	Transport protection cover (Art. 30100) Dolly (Art. 950056) Installation version (Art. 40060) Weatherproof (Art. 40610) RAL color (Art. 1073)
<b>Weight</b>	31 kg
<b>Dimensions (W x H x D)</b>	465 x 472 x 520 mm

# hd Sub15 datasheet

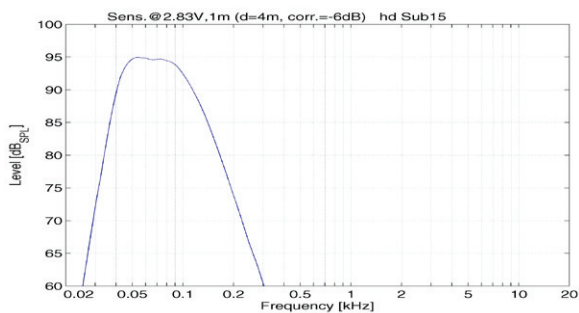
## Dimensions [mm]



## Impedance



## Frequency response with DSP preset



# hd Sub15 datasheet

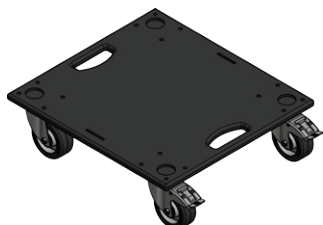
## Accessories



### Transport cover Sub15

Durable polyester protective cover with 10 mm padding and hd logo imprint

Order number: 30100



### Dolly Sub15

practicable dolly with velcro closure and 4 pcs. 100 mm wheels

Order number: 950056



### Install version

Elegant design for permanent installation without handles and without M20 flange

Order number: 40060 (hd Sub15i)



### RAL-Color

Special color per article according to RAL color chart

Order number: 1073



### Weather resistant

Impregnation against weather influences

Order number: 4610