

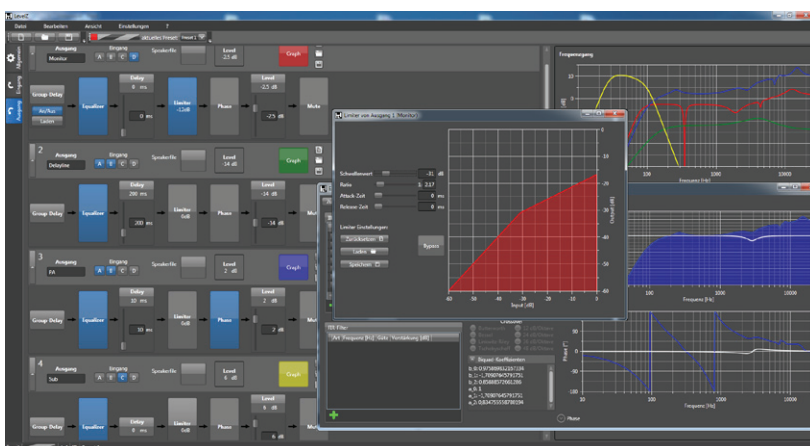
hd P18

Active System Subwoofer

The **hd P18** is from an acoustic point of view identical to the hd Sub18 with the difference that the hd P-series houses the high-end hd MultiDSP and powerful Class-D amplifiers in the same housing and thus becomes a basic building block for every mobile Plug & Play system. This new DSP platform now enables all processing and control functions of large sound systems in an easy-to-use Plug & Play active system. The extremely powerful hd MultiDSP offers FIR and IIR filters for the exact adaptation of the PA system to the respective application. The input section includes a routing matrix, a signal generator (sine and noise generator) and a freely configurable EQ with 16 IIR filters and a 384 taps FIR filter per input channel. Each output channel has 16 IIR filters, 384 taps FIR filters, 100 ms delay, 180° phase reversal, peak and RMS limiter, gain and mute. There are 20 factory presets for all hd speaker system configurations stored on the device for direct recall, so the device can always be reset to a defined default state. This guarantees highest reliability of the connected speakers and ensures a very dynamic and linear sound.

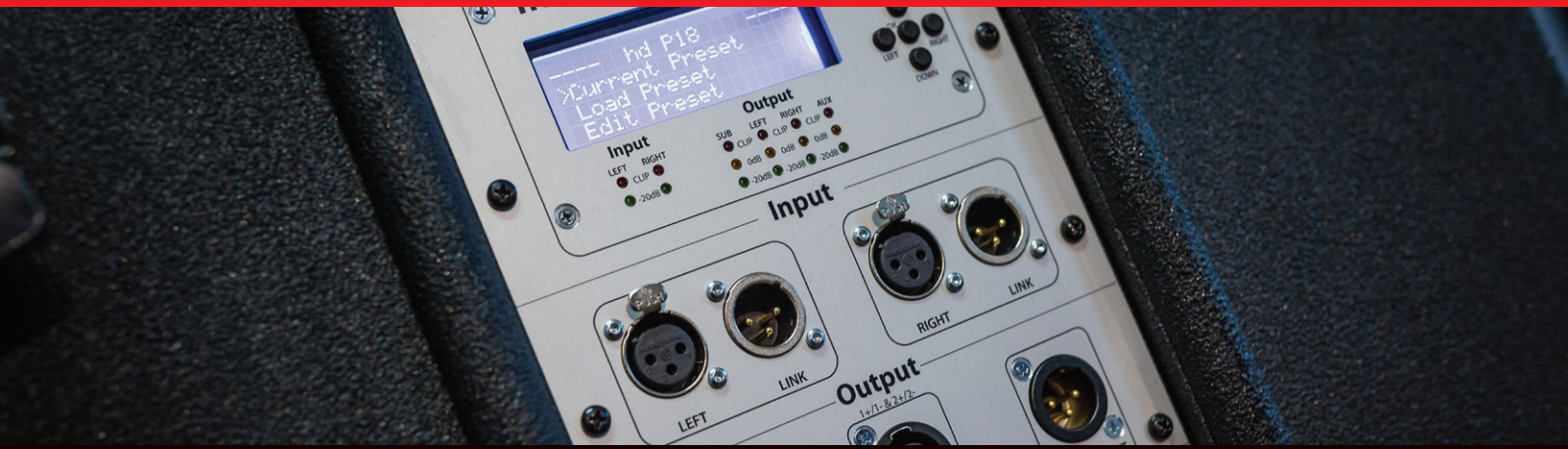


For user-specific settings, another 20 freely configurable user presets are available to store and manage individual system configurations. On the back there are LED indicators for each input and output channel and a USB interface for setting and managing all audio parameters via the PC.



In addition, the easy-to-use hd LevelZ PC Remote Software provides even more detailed information on individual requirements and an unlimited number of user presets and configurations.

hd P18 datasheet



The multi-channel Class-D amplifiers deliver up to 2500W on a single output channel and are designed to meet the highest audio quality and reliability requirements in mobile applications. This is ensured by a SMPS power supply with Power Factor Correction (PFC), which can be used even in unfavorable network conditions, such as undervoltage or overvoltage, thanks to a universal operating range of 85 V to 265 V, can provide full power at all times, making it far superior to conventional power supplies.

DSP Electronic Features

- 3-Channel Class-D amplifier (2500W/800W/800W)
- 2In/4Out High-End hd MultiDSP with >300 MIPS
- 384 taps FIR filter per input/output
- 16x IIR (double precision) filters per input/output
- multi-stage limiter architecture
- maximum reliability and performance
- 3.2"LCD with navigation buttons and USB
- access to all features on the device without PC
- windows-based remote software hd LevelZ

Acoustic & Mechanical Features

- 18" neodymium-high performance woofer
- very high maxSPL of 141dB
- compact dimensions
- robust enclosure with polyurethane coating
- parallel operation with hd Sub18 possible
- stand-alone or cardioid subwoofer array
- extends the frequency range below 35 Hz
- Installation version available

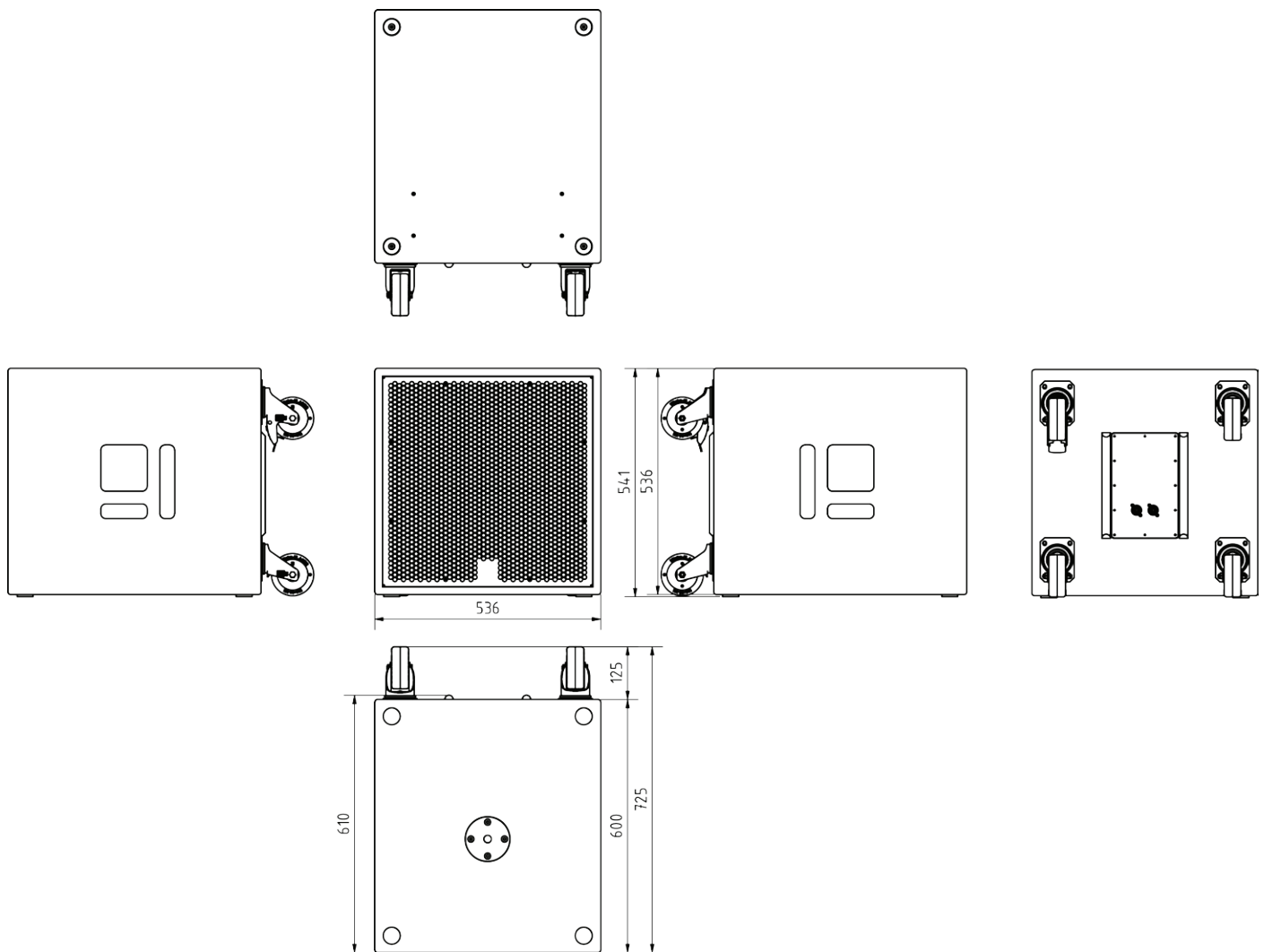
Application

Live sound reinforcement, restaurants, bars, cinema, conference rooms, hotels, A / V installations, multimedia applications, TV studios, churches

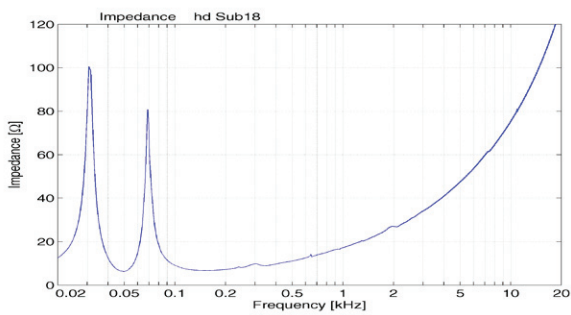
Model	hd P18
Order number	60020
Acoustic design	Bassreflex
Transducers	1x 18" N high excursion woofer
Crossover	variable via preset
Coverage (hor x ver)	omni, cardioid via preset
Frequency range (-6dB)	35 Hz - 100 Hz
Sensitivity (1W / 1m)	102 dB
Power Rating AES / Peak	1800 / 7200 W
SPLmax @ 10% THD	137 dB
Power @ 4 Ω	1x 2500 W + 2x 800 W
DSP	hd MultiDSP 2In 4Out FIR-/IIR-Filter multi-stage limiter architecture hd LevelZ Remote Software 3.2" LCD with buttons and USB
Connections	2x XLR Input + 2x XLR Link 1x NL4 Output TOP L (2-pol) 1x NL4 Output TOP R & SUB (4-pol) 1x XLR AUX Out 1x Powercon Mains
Enclosure	robust multiplex housing with polyurethane coating black, recessed connection panel, M20 thread, 2x transport handle, steel grille with acoustic foam inside
Optional Accessories	Transport cover (Art. 30115) Installation version (Art. 40074) hd SilentWheels Set (Art. 1035) RAL color (Art. 1073)
Weight	43 kg
Dimensions (W x H x D)	536 x 542 x 600 mm

hd P18 datasheet

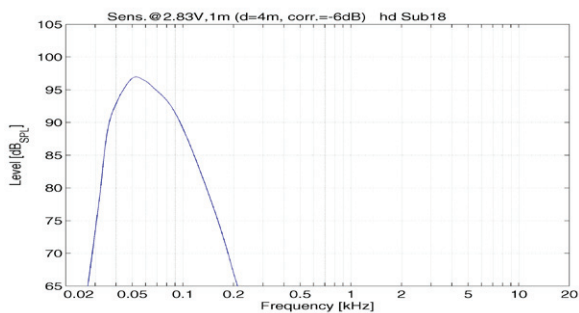
Dimensions [mm]



Impedance



Frequency response with DSP preset



hd P18 datasheet

Accessories



Transport cover P18

Durable polyester protective cover with 10 mm padding and hd logo imprint

Order number: 30115



hd SilentWheels set

acoustically decoupled 100 mm wheels 4 pcs (3x unrestrained + 1x braked) incl. 16 pcs carriage bolts

Order number: 1035



Install version

Elegant design for permanent installation without handles and without M20 flange

Order number: 40074 (hd P18i)



RAL-Color

Special color per article according to RAL color chart

Order number: 1073