



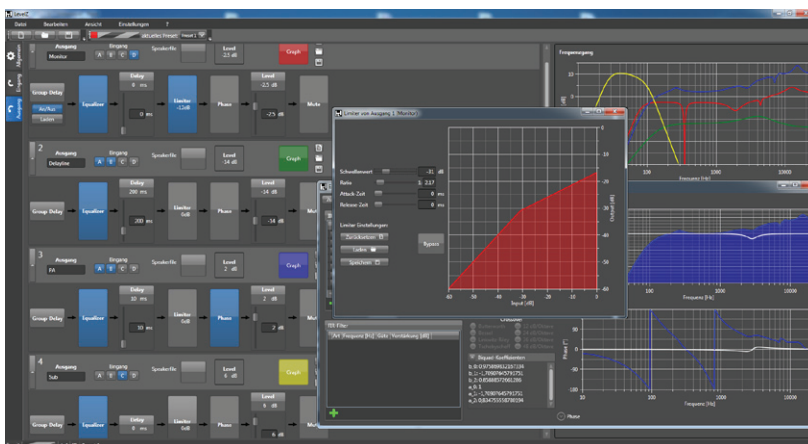
hd P12stereo

Active System Subwoofer

The **hd P12stereo** is from an acoustic point of view identical to the **hd Sub12** with the difference that the **hd P-series** houses the high-end **hd MultiDSP** and powerful **Class-D** amplifiers in the same housing and thus becomes a basic building block for every mobile **Plug & Play** system. This new **DSP** platform now enables all processing and control functions of large sound systems in an easy-to-use **Plug & Play** active system. The extremely powerful **hd MultiDSP** offers **FIR** and **IIR** filters for the exact adaptation of the **PA** system to the respective application. The input section includes a routing matrix, a signal generator (sine and noise generator) and a freely configurable **EQ** with 16 **IIR** filters and a 384 taps **FIR** filter per input channel. Each output channel has 16 **IIR** filters, 384 taps **FIR** filters, 100 ms delay, 180° phase reversal, peak and **RMS** limiter, gain and mute. There are 20 factory presets for all **hd** speaker system configurations stored on the device for direct recall, so the device can always be reset to a defined default state. This guarantees highest reliability of the connected speakers and ensures a very dynamic and linear sound.



For user-specific settings, another 20 freely configurable user presets are available to store and manage individual system configurations. On the back there are **LED** indicators for each input and output channel and a **USB** interface for setting and managing all audio parameters via the **PC**.



In addition, the easy-to-use **hd LevelZ PC Remote Software** provides even more detailed information on individual requirements and an unlimited number of user presets and configurations.

hd P12st datasheet



The multi-channel Class-D amplifiers deliver up to 500W on a single output channel and are designed to meet the highest audio quality and reliability requirements in mobile applications. This is ensured by a SMPS power supply with Power Factor Correction (PFC), which can be used even in unfavorable network conditions, such as undervoltage or overvoltage, thanks to a universal operating range of 85 V to 265 V, can provide full power at all times, making it far superior to conventional power supplies.

DSP Electronic Features

- 3-channel Class-D amplifier with 3x 500W
- 2In / 3Out High-End hd MultiDSP with > 300 MIPS
- 384 taps FIR filter per input / output
- 16x IIR (double precision) filters per input / output
- multi-level limiter architecture
- maximum reliability and performance
- LED level meter and USB
- Windows-based remote software hd LevelZ

Features

- 12" long-excursion woofer
- high SPL with up to 122 dB
- compact dimensions
- robust multiplex housing with textured paint
- extendable with passive subwoofer hd Sub12
- extends frequency range below 40 Hz

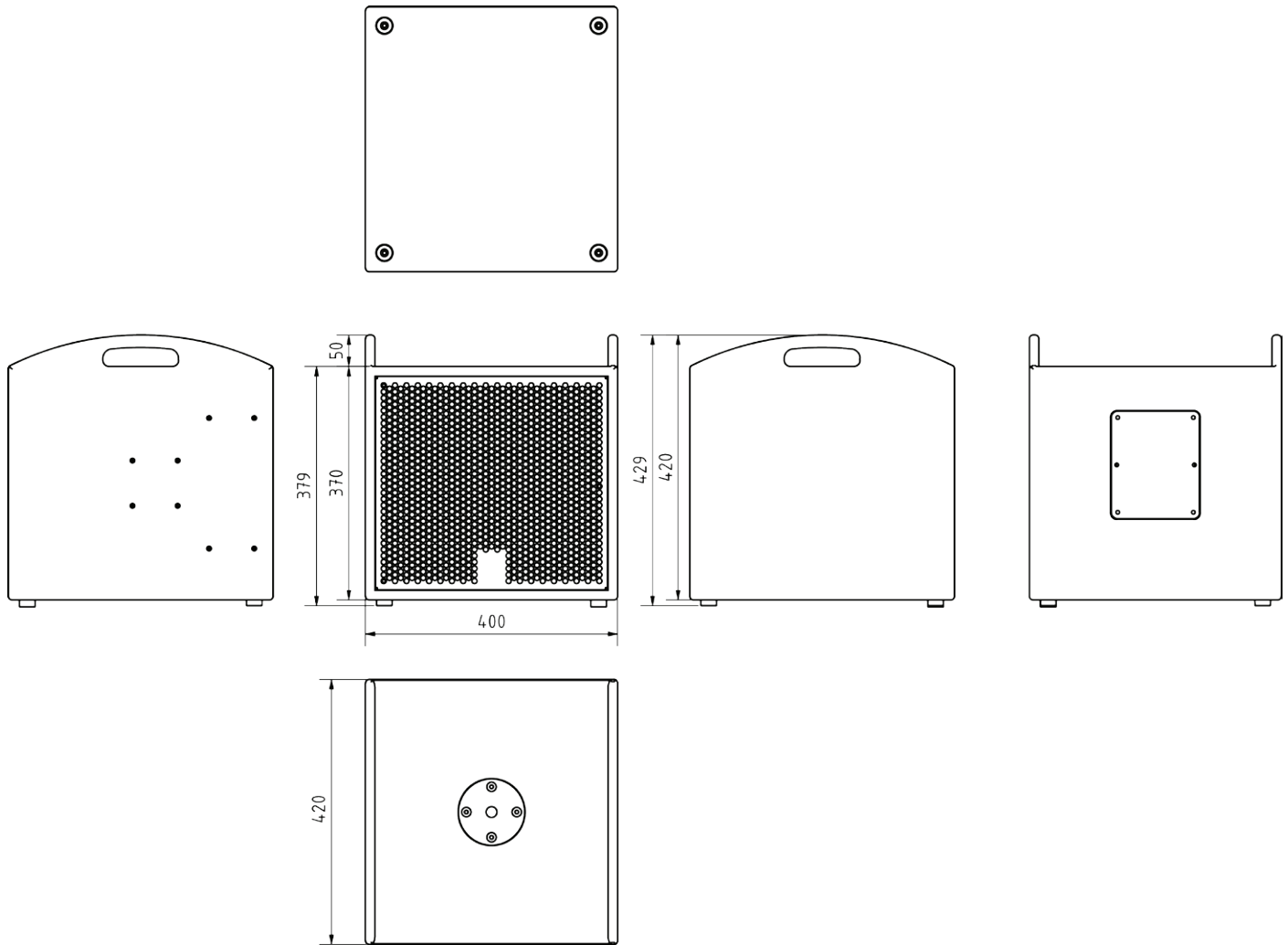
Applications

Live sound system, restaurants, bars, cinema, conference rooms, hotels, A / V installations, multimedia applications, TV studios, churches

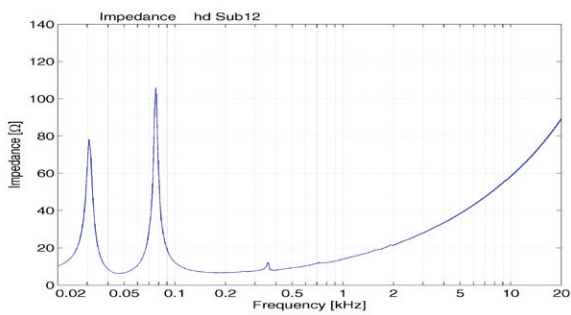
| | |
|--------------------------------|--|
| Model | hd P12stereo |
| Order number | 60001 |
| Acoustic design | Bass reflex |
| Transducers | 1x 12"-long-excursion ferrite woofer |
| Crossover | variable according to the preset |
| Coverage (hor x ver) | omnidirectional, cardioid with preset |
| Frequency range (-6dB) | 40 Hz - 180 Hz |
| Sensitivity (1W / 1m) | 98dB |
| Power Rating AES / Peak | 400 / 800 W |
| SPLmax @ 10% THD | 122 dB |
| Power @ 4 Ω | 3x 500 W |
| DSP | hd MultiDSP 2In 3Out with FIR / IIR filter multi-stage limiter architecture hd LevelZ Remote Software LED indicators and USB |
| Connections | 2x XLR Input 1x NL4 Output TOP L (2-pin) 1x NL4 Output TOP R & SUB (4-pin) 1x Mains appliance plug |
| Enclosure | robust multiplex housing with Warnex textured paint black, recessed connection panel, M20 thread, 2x carrying handle, steel grille with acoustic foam inside |
| Optional Accessories | Transport cover (art. 30107) Install version (art. 40050) RAL-Color (art. 1073) |
| Weight | 19 kg |
| Dimensions (W x H x D) | 400 x 430 x 420 mm |

hd P12st datasheet

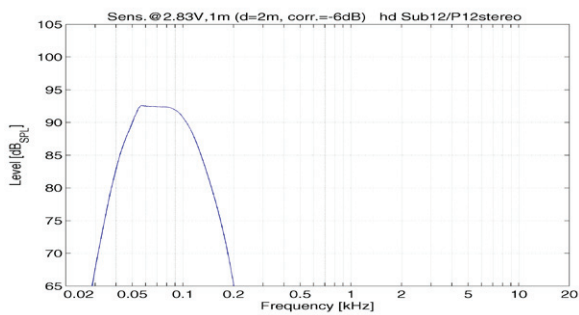
Dimensions [mm]



Impedance



Frequency response with DSP preset



hd P12st datasheet

Accessories



Transport cover P12st

Durable polyester protective cover with 10 mm padding and hd logo imprint

Order number: 30107



Install version

Elegant design for permanent installation without handles and without M20 flange

Order number: 40050 (hd P12sti)



RAL color

Special color per article according to RAL color chart

Order number: 1073