



hd MP12N

Multi Purpose Loudspeaker

The **hd MP12N** is a multifunctional, passive 2-way system with innovative acoustic design and is equipped with proven high-performance components of the hd HLS-series consisting of a powerful 12" neodymium woofer in a vented design and a 1.4" exit neodymium compression driver. The outstanding large and rotatable horn allows a



very low crossover frequency and ensures a high directivity ensuring a controlled radiation behavior. Two horn variants allow different horizontal and vertical dispersion angles of either 90° x 60° or 60° x 40° as FOH or monitor loudspeakers at concerts or in fixed installations as clusters in sports venues or theaters. The acoustic and mechanical design provides a coherent and interference-free reproduction of all music genres and sounds when connected to any power amplifier without additional DSP preset, even without a hd system amplifier. For applications with additional subwoofers the hd Sub- / P-series extends the frequency range of the speaker and integrates the hd MP12N seamlessly into the harmonic design system concept of a holistic system.

Features

- high performance 12" neodymium woofer
- extreme power rating of 600W AES / 2400W PEAK
- two monitor angles 32° and 45°
- different Coverage angles 90° x 60° / 60° x 40°
- Integrated frequency and phase optimization
- compact dimensions
- operation on any amplifier

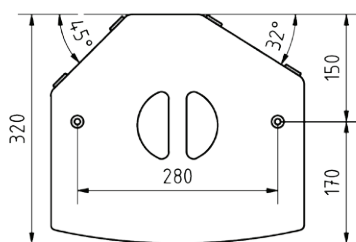
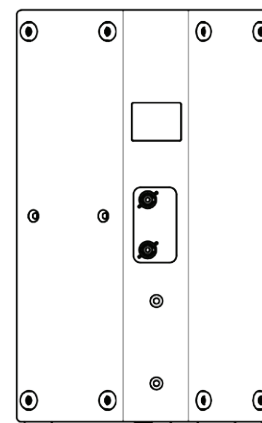
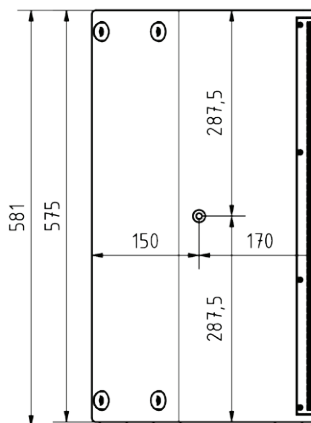
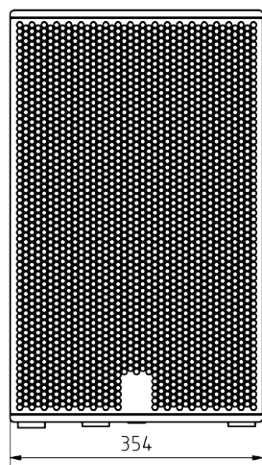
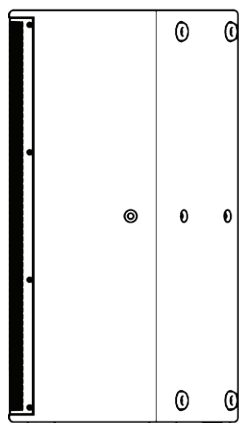
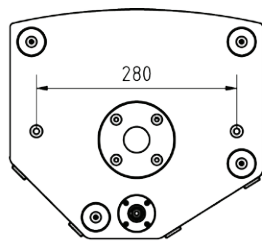
Applications

FOH or monitor system, mobile or fix installation, live events, clubs, sports venues, theaters, city halls, theme parks

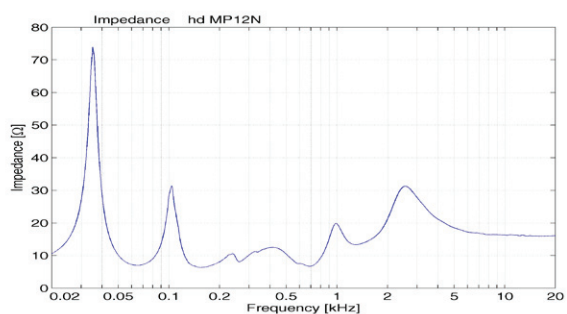
Modell	hd MP12N
Order number	60071 - 90° x 60° horn 60072 - 60° x 40° horn
Acoustic design	bass reflex, time aligned
Transducers	1x 12"N-woofer 1x 1.4"N-compression driver
Impedance	8 Ω
Crossover	900 Hz
Coverage (hor x ver)	90° x 60° or 60° x 40°, rotatable
Frequency range (-6dB)	55 Hz - 20 kHz
Sensitivity (1W / 1m)	100 dB
Power Rating AES / Peak	600 / 2400 W
SPLmax @ 10% THD	134 dB
Enclosure	robust multiplex housing with polyurethane coating black, recessed connection panel with 2x NL4, 1x NL4 on bottom, 35 mm flange, carrying handle, steel grille with acoustic foam
Optional Accessories	transport cover (art. 30116) U-Bracket (art. 908517), RAL color, Wall holder (art. 900852), weather protection, mounting adapter (art. 900866)
Weight	18 kg
Dimensions (W x H x D)	354 x 575 x 320 mm

hd MP12N datasheet

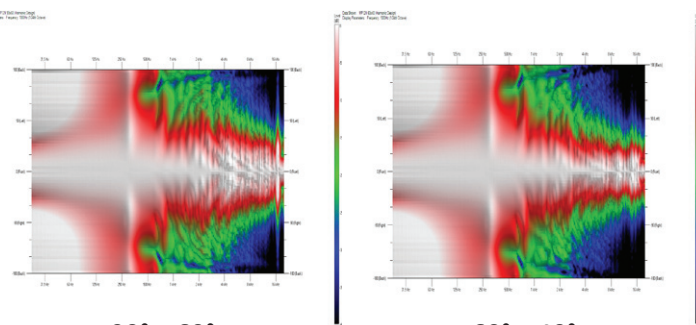
Dimensions [mm]



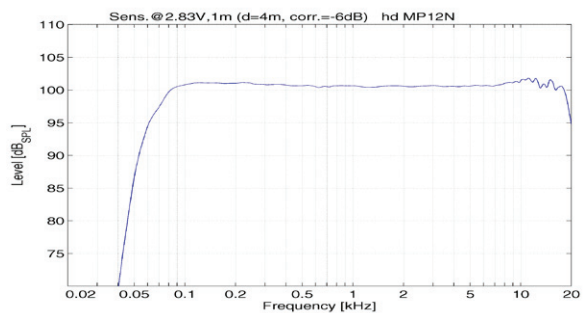
Impedance



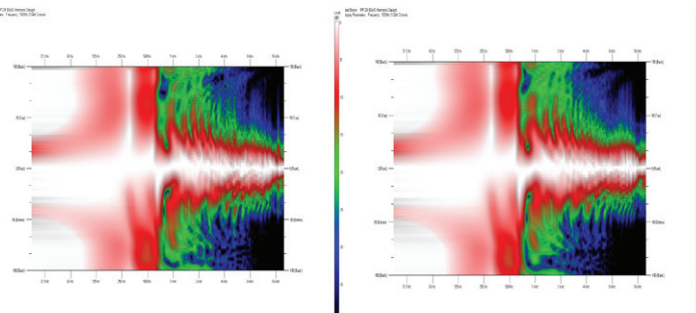
Horizontal Isobars



Frequency response with DSP preset



Vertical Isobars



hd MP12N datasheet

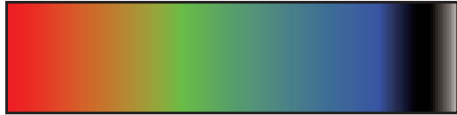
Accessories



Transport cover MP12N

Durable polyester protective cover with 10 mm padding and hd logo imprint

Order number: 30116



RAL-Color

Special color per article according to RAL color chart

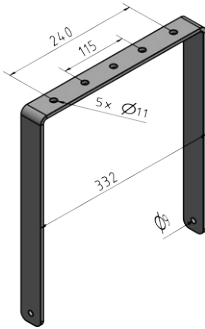
Order number: 1070



Weather resistant

Impregnation against weather influences

Order number: 4610

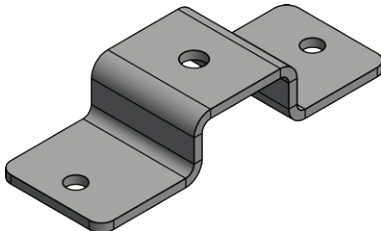


U-Bracket MP12N

U-bracket for flying on a truss or tilting on a tripod. Five mounting holes on the top for mounting half-couplers or tripod adapters

incl. 2x M8 star grip screw

Order number: 908517 (black RAL 9005)



Omega mounting adapter half clamp MP12N

For mounting a half clamp

Order number: 900868 (black RAL 9005)



Mounting adapter wall bracket MP12N

For use with wall bracket 24481

Order number: 900866BLK (black RAL 9005)
900866W (white RAL 9010)



Wall mount bracket 24481

Wall distance 110 mm, laterally swiveling with inclination up to 30°

Load capacity: 25 kg
Dimensions (W x H x D): 120 x 220 x 110 mm
Order number: 900852BLK (black RAL 9005)
900852W (white RAL 9010)